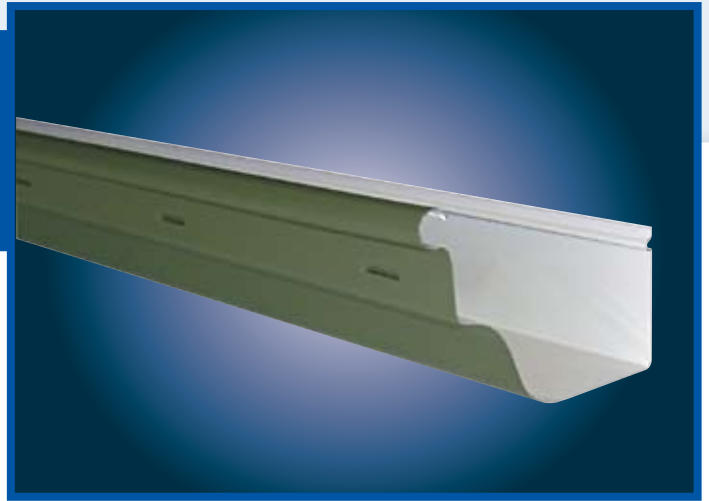


OGEE GUTTER Accessories



Slotted or Unslotted Fascia Gutter

JH Stephenson & Son OGEE Gutter is a very popular gutter with Victorian and Federation homes. This attractive gutter is also very strong due to its shape.

A complete range of angles, stop ends and pops are available. Available with or without slots.

Made from quality Colorbond® steel.

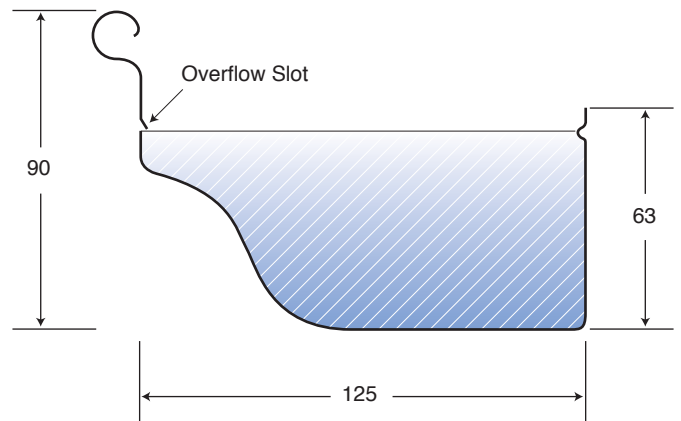
Important

Acid wash for brickwork must not come in contact with steel fascia and gutter systems. If inundating the fascia system is possible, thoroughly wet the fascia before acid wash, then thoroughly wash a number of times to remove any over splash. Poor brick wash practice will cause severe corrosion.

NOTE: Steel Fascia is not trafficable and must not support live loads and personnel.

The roof applications to have a tilt batten to support gutter line tiles (NOT FASCIA).

Dimensions



STOP END
Galvanised or Colorbond®



EXTERNAL BRACKET
Fixing to Fascia



DIE CAST ANGLES
Internal & External
45° and 90°



INTERNAL BRACKET
Concealed fixing to Fascia



GUTTER STIFFENER
For fixing to Metal Fascia



SPRING CLIP
For fixing to Metal Fascia

